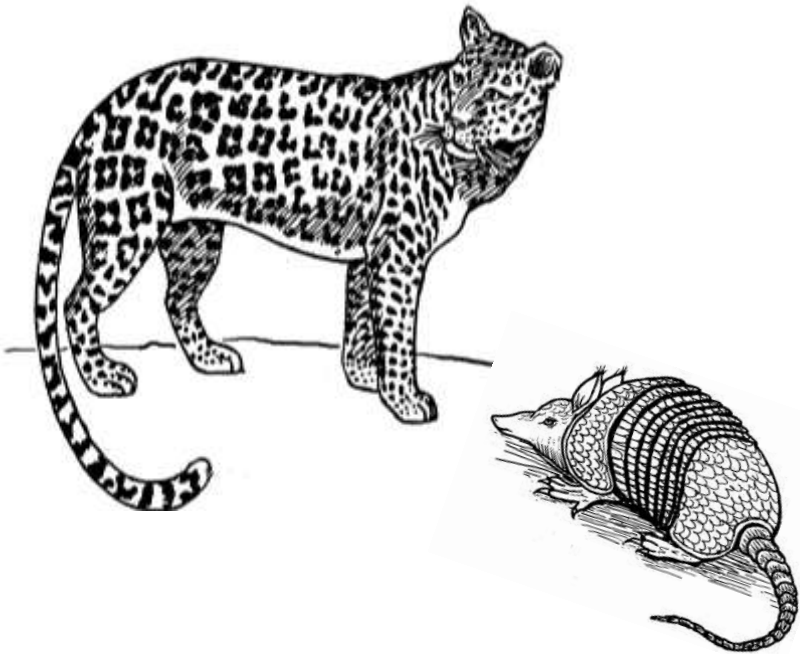


# GAA KHAMÍ ENDII'



Mi'phaa Mínuúí

*Mi'phaa Miguí* • tpl  
(tlapaneco de Tlacoapa)

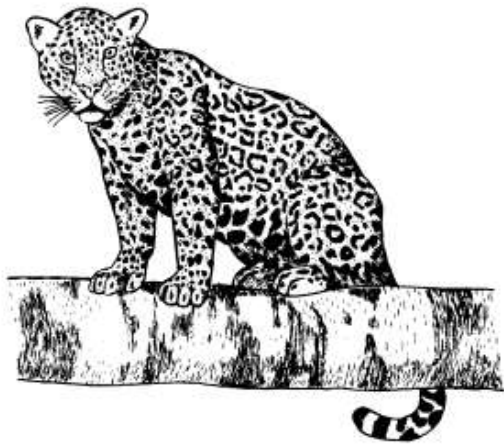
Autora: *Reina Méndez Méndez*

Redacción: *\*Emily Neri Méndez\**

Borrador  
14 de mayo 2008

Gaa\_Endii\_folleto\_tpl.pub

# GAA JMAA ẸNDII'



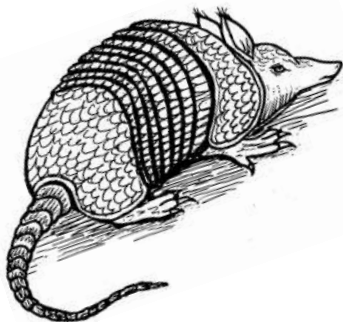
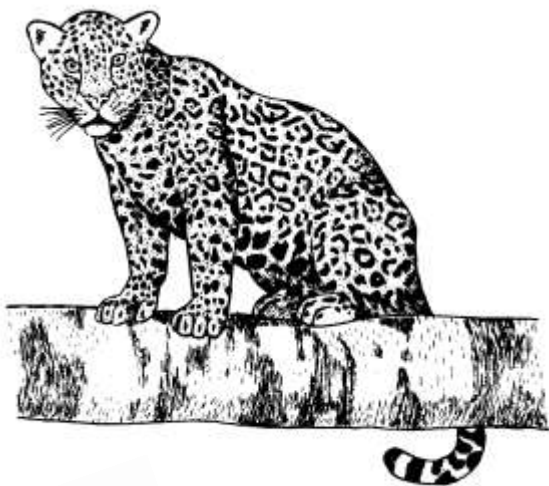
Mbá mi'tsú mbáá ẹndii'  
nde'yoo gaa náa ngamuu rayáa'  
ñuū na'khūū.



A'khuj e'thá ɛndii':

—Mij'khuaa' —e'thúyn.

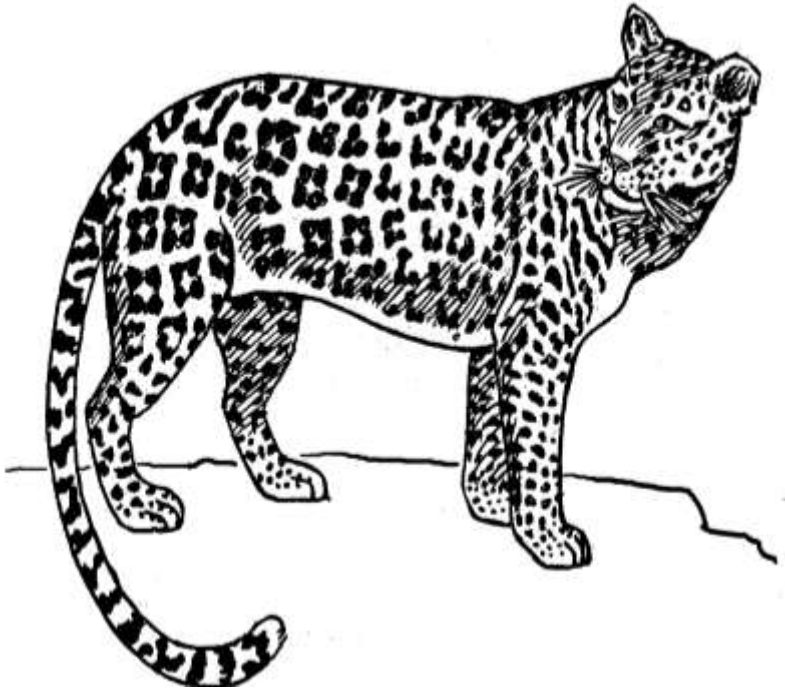
—Jáan, áan, áan mi'tsú'  
—e'thá gaa.



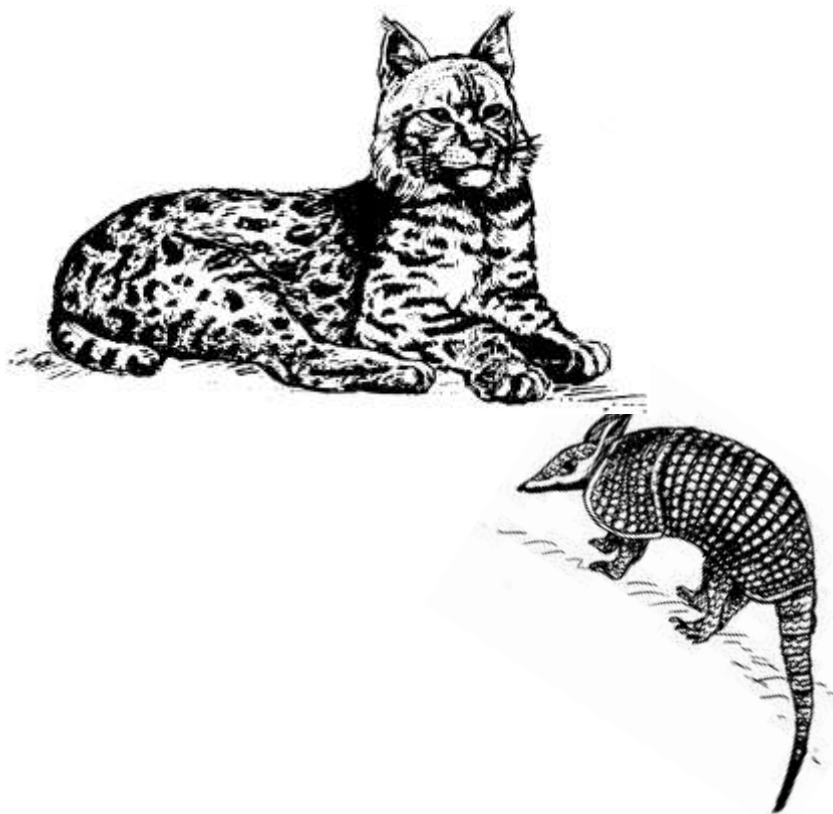


—Mú rí mi'tsú' án —e'thúyn—,  
athatsínú' ma'gáa' la íjñá ngáo'  
rexo'.

—Jaan —e'thá ɛndii'.



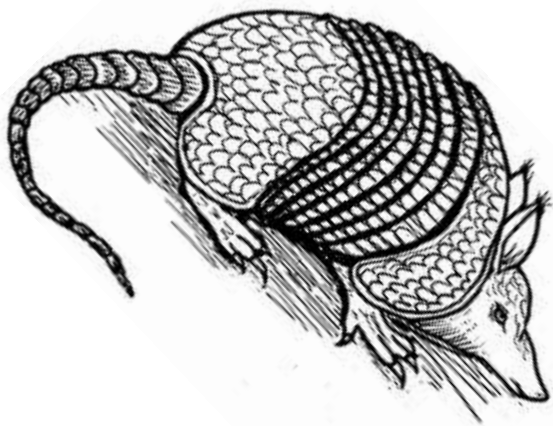
A'khuḷ má nẹkḷ ẹndii'  
áḡi'thuḷun náḷ rauun' gu'jóó ḡḷḷ.  
Nde'yoḡ ni'lḡḷa rexḡḡ.



A'khuj e'thá tsú gaa, rí  
ngarigoo ra'jñij ikhí:

—Mba jmba, khue' khue',  
xuá-gaa —e'thíin.

A'khuḷ ríndoo wámboḡ ni'jhiḷ,  
“sruḡḡn” neta'jaḡ-li náḡ iñúú' gu'jóḡ.







A'khuḷ ḷndóó lá ɛndii' gí'.  
Nánɡuá lá xtáa ɡaa miḷkhuḷ. ḷndóó  
“ańḷin” e'ni ɛndii' rá.

Indóó ikhaa júbátigee gí' xóó',  
nánguá lá xtáa tsú mikhuy.

Xú'khuı ja'nii nigí'nuu, mí'.





